



**Grove Park**  
BAPTIST CHURCH

108 TRAIL ONE  
BURLINGTON, NC 27215

CONTACT US:

Phone: 336-227-2910

Email: [office@groveparkchurch.com](mailto:office@groveparkchurch.com)

Online: [www.groveparkchurch.com](http://www.groveparkchurch.com)

Office Hours:

Monday-Thursday  
8:30 a.m. - 3:30 p.m.

Check us out on:

Facebook: [Facebook.com/groveparkchurch](https://www.facebook.com/groveparkchurch)

Instagram: [groveparkchurch](https://www.instagram.com/groveparkchurch)

YouTube: [YouTube.com/@groveparkchurch](https://www.youtube.com/@groveparkchurch)



NON PROFIT ORG.  
U.S. POSTAGE PAID  
BURLINGTON, NC 27215  
PERMIT NO. 140

Return Service Request

**UPCOMING EVENTS:**

Sundays	5:00 p.m.	Family Hour (unless otherwise noted)
Mon., Wed., Thurs.	Noon	Devotional on Facebook Live
Tuesdays	7:00 p.m.	Bible Study on the Book of Acts (Zoom)
Wednesdays	6:30 p.m.	Facebook Prayer Meeting
	7:00 p.m.	Zoom Prayer Meeting
	7:00 p.m.	Choir Rehearsal
Thursdays	7:00 p.m.	GPBC Book Club (Zoom)
October 01	6:00 p.m.	Deacon Fellowship
October 04	Noon	ROMEO's meet at Southbound Sandwich Shop
October 09	7:00 p.m.	Finance Committee (in person)
October 10		Primary Election in gym at GPBC
October 19	11:30 a.m.	SIA's Antique Roadshow
October 20		Provide meal for Williams Varsity Football Team
October 28		Fall Festival



MONTHLY NEWSLETTER OF GROVE PARK BAPTIST CHURCH | OCTOBER 2023

The recent meanderings of Hurricane Lee as it moved toward eventual landfall in Nova Scotia triggered for some of distant memories of the Great Hurricane of 1938. The "Long Island Express" as it became known remains the deadliest and costliest storm in New England history and offers us some important lessons as we encounter and seek to weather the metaphorical storms of life. One of the most glaring lessons for us is that storms often come out of no where and can defy all established norms. The Long Island Express was thought to be much farther south and moving out to sea when it suddenly made landfall on Long Island traveling at a remarkable 47 MPH! Such speed was unheard of as was a storm so far north and yet with trains unknowingly racing along the shore and school busses ferrying children across narrow causeways, the storm hit unexpectedly and changed everything. Those who were best prepared that day were those who knew how the sea acted and responded in kind to the tempest. Likewise, when we know God and the security of the Holy Spirit, though we may be buffeted by storms, we can respond to them in the strength and wisdom that God affords.

Now, some may be thinking that all storms are not the same, some are life changing. After all, the Long Island Express was so consequential that the U.S. Coast and Geodetic Survey warned that every map of New England and Long Island required redrawing after the storm. One Rhode Island family owned 50 acres of shorefront land the morning of the storm and only 2 acres the next morning. The 1938 storm not only changed geography, it had societal and economic ramifications. The rigid social stratification that had existed during the "old New England summers" where the wealthy poured in from "the City" and dominated culture suddenly vanished. Railways had still been the dominant means of transport in the New York-Boston corridor despite the availability of airplanes. The storm washed out or damaged so many roads, bridges, and railroad tracks that airplane travel was the only means of travel available for weeks. Instantly, those skeptical of air travel were won over by necessity and flight became the dominant mode of travel in that area and remains so today. Beloved, we should be mindful of when such storms strike us personally or communally and instead of attempting to refashion the old, determine how we can meaningfully engage and embrace the changed environment that's been created before us. We should do so boldly, knowing that times and circumstances inevitably change, but God remains timeless as does the divine command to share changeless grace and hope in ever-changing times.

I suspect our task would be far easier if we saw in the cluttered midst of a storm's aftermath how beauty has been created by the gale. So, let me direct your attention over the next month to the scenic vistas that will inevitably grace social media accounts, news reports, and commercials showing the majestic colors of Fall across New England. These scenes are brought to you in no small part by the Great Hurricane of 1938. You see, the hurricane wrecked havoc on New England forests uprooting nearly 1,000 square miles of forest. For perspective, the US Forest Service estimated there was enough fallen timber to build over 200,000 five room houses. 90% of the trees felled by the storm were white pines and there was significant concern that leaving them strewn would be a fire hazard. So, the Forest Service deployed the WPA and the CCC, two New Deal employment programs, to clear out the forests and in doing so allowed the seedlings and saplings of maples, birches, and oaks to take root and grow. These younglings would have never seen light to grow because of the pines' smothering canopy if not for the hurricane. Over the next few weeks, people far and wide will marvel at the beauty of God's handiwork ignorant of the fact that it was birthed by a sorrowful storm. Beloved, may we be ever attentive to how God is using storms to birth beauty in our lives and may we be willing to expose beauty in the midst of the storm such that others may be buoyed by God's grace in their storms.

Grace Abounds,

Marc

“And after he had dismissed the crowds, he went up on the mountain by himself to pray.

When evening came, he was there alone...” - Matthew 14:23

Jesus had just fed 5,000 men, plus an untold number of women and children, using a donation of 5 loaves and 2 fish. When the meal was over and the ministry concluded, he sent everyone (including his friends) away - the crowds to their homes and the disciples to a boat. He needed some time alone with God.

Don't miss that. In this instance, Jesus didn't just send the crowds away. He sent his disciples away as well. And, he didn't just tell them to go just a little bit down the road; he told them to get in a boat and go to the other side of the water. When the disciples left in the boat, He didn't tell them to make sure they left one for him to use. No, Jesus intended to be really alone, away from everybody and all their needs, and evidently for a significant period of time.

If Jesus, the Son of God, needed to take time away from everybody, so he could focus solely on God, don't we need to do the same? Don't we need to pull away at times and focus solely on Him?

We're entering into a busy time of year. There's football and cooler weather and plans for upcoming holidays and family events. There's shopping for feasts and Christmas presents. There's new music to learn. There's so much to do.

Make sure that you take time to pull away from all this and focus solely on God. It's not selfish to go off by yourself for a while, removing your attention from people and plans and events, so you can be together with your Father. That's not selfish; it's essential. Again, if Jesus needed it, how can we think we don't need time alone with God? Even more, how can we feel that we're too busy to pull away from the demands of the day in order to spend time with Him?

Friends, please make sure to do more than just include Him in your daily life. That's good, but it's not enough. It's far better to put your daily life aside from time to time, so you can simply be in the presence of the One who loves you more than anything.

It might sound strange, but at times I hope we don't see you here, because you're spending time solely with Him.

Dale



(Our Known)  
**October Birthdays**

Nancy Webster	October 01
Olivia Trull	October 01
Jennie Palmer	October 04
Donna Lawson	October 06
Bob Webster	October 07
Debbie Loy	October 07
Sharon King	October 10
Joan Smith	October 11
Lauren Willets	October 13
Julie Bogart	October 21
Diane Stalls	October 24
Wallace Wood	October 24
Mitchell Denard	October 26
Jean Vines	October 26
George Britton	October 27



**Hope Boxes:** We met our goals for crayons, markers, colored pencils and toothbrushes! Great job, everyone! For the month of October, our item is socks. Sizes include women's size 6-10, men's size 9-12, kid's size, both boys and girls, 1-4. School supplies are beginning to wind down and as that occurs many times stores put the excess on clearance to get rid of it quickly. Take a look at store clearance especially for water bottles, pencil pouches or boxes, headphones, erasers, pens, highlighters and other fun items. This is a great time to get some super cheap items.

**Alternative Christmas Market:** We are beginning to work on our ACM for this holiday season. If there is an organization you would like our Missions Committee to evaluate for inclusion in our market, please let a member of the committee know or you can contact the church office. Committee members are: Rev. Marc Sanders, Matthew Byrd, Eliza Sanders, Caleb Warren, Krissy Szczepanski, and Nancy Webster.

Ministers On Call for the Month of October:

October 05 thru October 08	Deacon Joan Smith
October 12 thru October 15	Deacon Jim Etheridge
October 19 thru October 22	Deacon Larry Dodson
October 26 thru October 29	Deacon Jason Bogart

**GROVE PARK CHURCH ANTIQUES ROAD SHOW**

Sponsored by SIA -Seniors in Action

Have you ever wondered if that old stuff in the closet or stashed away in the attic or in the back of the drawer has any value? If so, plan to attend our own



**ANTIQUES ROAD SHOW!**



Thursday, October 19th - 11:00 a.m. - 2:00 p.m. In the Gym

Tony and Donald Whitfield from Carolina Pickers in Mebane, NC will be available for evaluations at no cost to you.

Please sign up all who will attend on the signup sheet on the bulletin board or call the church office.

Bring antiques no larger than will fit in the trunk of your vehicle and smaller and not more than 2 items.

Suggestions: Toys from your childhood, antique tools, cards/postcard collections, clocks/watches, quilts, glassware, silver hollowware, dolls, lamps, jewelry, military memorabilia, other collections, small furniture, etc..

\*Please NO Firearms\*

**Flexible Timetable**

11:00 a.m. - 12:00 p.m. - Bring items to the gym and set up your display. Evaluations will begin after you set up your display. During this time attendees can peruse what others have brought.

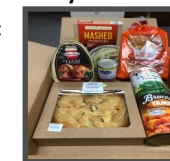
NOON - A light lunch will be served.

1:00 p.m. Program - The Whitfields will tell about a few unique items from those on display.

\*NOTE: Tables and floor space will be set up in the parking lot end of the gym for you to display your items. The breezeway end of the gym will be set up for lunch and program.

**OPERATION BIG THING :** Grove Park wants to remove some of the burden that attends families during the Thanksgiving season by continuing with our Operation Big Thing. We will, once again, be providing our "Big Thing Box" which will contain the following:

Ham	Stove Top Stuffing Mix / 6 oz.	Family Size Green Beans / 39 oz. can
Yams (Sweet Potatoes) / 40 oz. can	One Package of Dinner Rolls	Cranberry Sauce / 14 oz can
One Apple Pie		



We have calculated that each box will cost \$40. We encourage you to participate in two ways. As you do your shopping, we ask that you pick up one of four items—a box of stuffing mix, a can of cranberry sauce, a can of sweet potatoes or a can of green beans—and bring them to the church to put in the box. Or, simply make a contribution to "Operation Big Thing" and we will do the shopping. We plan to distribute the boxes the week of Thanksgiving and will also need assistance in packing and distribution. If you have any questions or are able to volunteer, please let the church office know.